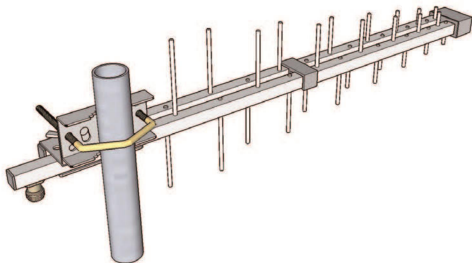


LOG7902700

Log Antenna Band 790÷2700MHz. Connector N and 19 elements



Suitable for particularly unfavorable environmental conditions. The antenna is made of tubular aluminum . 2mm thick pre-galvanized steel fixing bracket to the pole, positioned in the rear part of the antenna. The antenna can be mounted in horizontal and vertical polarization. The antenna are supplied fully assembled.

- Double aluminum cradle 14x14x0,8mm
- Aluminum elements diameter 4mm
- N connector located on the back of the antenna.
- Fixing pole maximum diameter from 25 to 60mm, with elevation adjustment $\pm 20^\circ$.
- Antenna galvanically connected to the fixing pole by means of the fixing bracket.

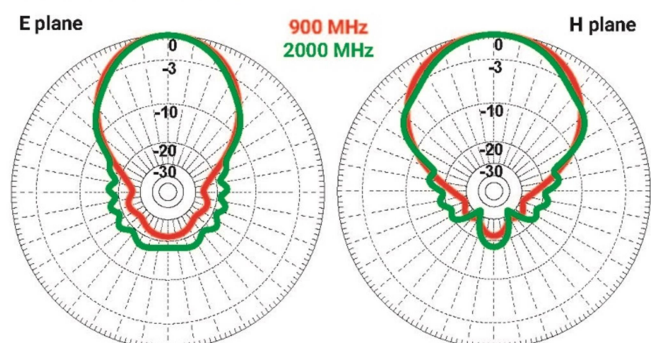
Electrical Features

Frequency	790 ÷ 2700 MHz
Bandwidth	1910 MHz
Impedance	50 Ω
VSWR	< 1,7
Gain	9÷11 dB
Front to Back Ratio	> 15dB
Polarization	H/V
Light Protection	Galvanic mass to the fixing pole
Max Power	100 W
Connector	N female a 50 Ω

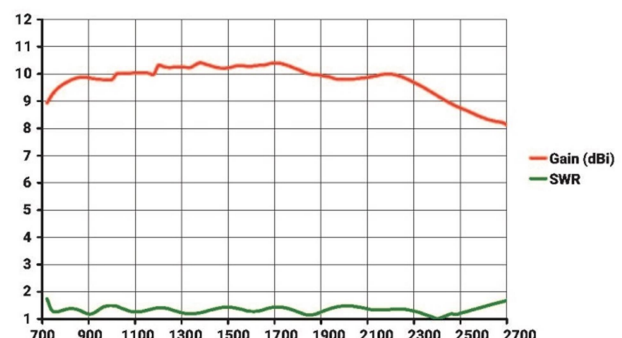
Technical Features

Material Antenna	Al alloy 6060
Cradle dimensions	14x14x0,8 mm
Elements Size	\varnothing 4 mm
Number of elements	19
Removable elements	-
Length	870 mm
Width	190 mm
Weight	750 g
Wind resistance	150 km/h
Mounting pipe	\varnothing 25-60mm
Elevation Adjustment	+/- 20°
IP rating	IP65
Temperature range	-30°C to 65°C

RADIATION PATTERNS



GAIN (dBi) and SWR





The antenna is fully assembled

By turning the tie rods of the bracket it is possible to carry out the assembly in vertical and horizontal polarization.

Connector fixing should not be done with wrenches, but only with manual tightening.

Pole attack (from Ø25 to 60 mm)

